



BITUMEN IMPREGNATED WOOD FIBER FILLERS & PROTECTION BOARDS

BITUBOARD

PRODUCT DESCRIPTION

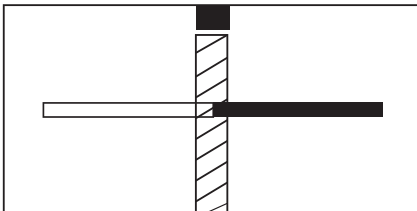
UNITECH Filler Boards is manufactured from highly resilient softwood fibers coated with bitumen. Filler Boards are dry and clean, and cannot extrude any form of staining matter. They are resistant to moisture penetration and ice formation in the joint. They are immune to dry and wet rot, fungus and most forms of insect attack or similar forms of deterioration.

They completely fills joints under repeated cycles of expansion and contraction with minimum extrusion. They are also a good insulating vapor barrier which is easily handled without breakage.

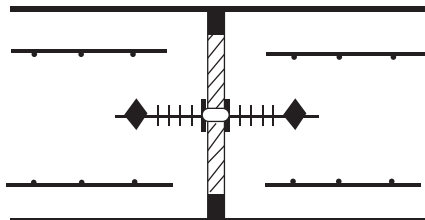


BASIC USE

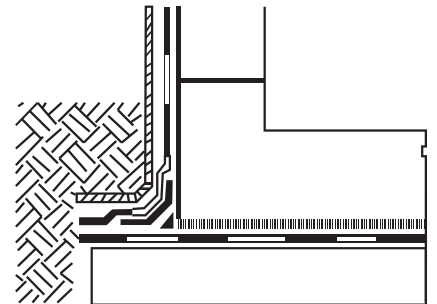
UNITECH Filler Boards are designed as a standard, Low cost, pre-moulded joint filler for expansion joints in civil engineering and building construction works of all types. The main uses for Bituboard in the construction industry are: roads, bridges, runways, pedestrian areas, basements, retaining walls and site slabs.



Expansion Joint Concrete Slabs



Expansion Joint in Vertical Walls



Protection to Waterproofing Membranes

PROTECTION WORK

UNITECH Filler Boards are recommended for the protection of different materials, particularly waterproofing below-grade where abrasive and sharp backfill material could puncture or otherwise damage the waterproofing.



TECHNICAL SPECIFICATIONS

Specification	Unit of Measurement	Value for Nominal Thickness in mm			
		9.5 & 10	12 & 12.5	18 - 20	24 - 25
Density of dry board	kg/m ³ lb/ft ³	296 18.5	28.1 17.5	252 15.7	262 16.3
2h volume water absorption	%	4.1	3.4	1.9	1.6
24h volume water absorption	%	20	18	8	7
Moisture content	%	5.4	5.2	5.7	5.3
Asphalt content	%	10	10	10	10
Linear variation with change in moisture content	%	0.13	0.11	0.11	0.10
Compression	mm in	0.21 0.008	0.48 0.019	0.38 0.015	0.47 0.018

* 20% Bitumen content is also available

* 35% Bitumen content is also available

TYPICAL PERFORMANCE CHARACTERISTICS

Properties	Test Method
Extrusion under Compression	<1mm
Application Temperature	-25°C to 80°C
Weather Resistance	-40°C to 130°C under normal usage
Shelf Period	> 2 years
Storage Requirements	Store flat, preferably under cover
Flash Point	>200°C
Flammability	Will burn slowly, does not support spread of flames
Toxicity	Non toxic under normal conditions of use
Chemical Resistance	Dilute acids -Excellent Dilute alkalis -Excellent Aliphatic hydrocarbons -Fair Aromatic hydrocarbons -Fair Chlorinated solvents -Fair Salt solutions -Excellent Detergent solutions -Excellent Water -Excellent
Shrinkage Factor	<0.5%
Specification Compliance	ASTM D1751-18, BS EN 13986 AASHTO M 213 Corps of Engineers CRD-C 508 Federal Specification HH-F-341 F, type I

LOCATIONS

KIGDOM OF SAUDI ARABIA

unitech.ksa@ikkgroup.com

Jeddah

Tel : +966 12 627 8222
Fax: +966 12 627 8722

Jeddah - Ghurab Showroom

Tel : +966 12 667 2000
Fax: +966 12 661 4306

Mak kah/Taif

Tel : +966 12 541 1206
Fax: +966 12 532 1675

Mad inah

Tel : +966 14 842 1095
Fax: +966 14 842 1090

Yanbu

Tel : +966 14 390 1499
Fax: +966 14 322 7101

Khamis Mushayt

Tel : +966 17 237 5929
Fax: +966 17 237 8783

Najran

Tel : +966 17 546 3873
Fax : +966 17 546 3873

Al Baha

Tel : +966 17 237 5929
Fax: +966 17 237 8783

Sharorah

Tel : +966 17 532 8153
Fax: +966 17 532 8153

Gizan

Tel : +966 17 321 6660
Fax: +966 17 321 0665

Riyadh North

Tel : +966 11 415 5465
Fax: +966 11 456 6627

Riyadh South

Tel : +966 11 448 0112
Fax: +966 11 447 7421

Riyadh West

Tel : +966 11 431 6271
Fax: +966 11 431 7642

Riyadh East

Tel : +966 11 448 0112
Fax: +966 11 447 7421

Qassim / Buraidah

Tel : +966 16 382 3946
Fax: +966 16 385 2186

Hail

Tel : +966 16 543 3931
Fax: +966 16 543 3935

Skakah / Qurayyat

Tel : +966 14 626 3904
Fax: +966 14 626 3905

Tabuk

Tel : +966 14 423 5203
Fax: +966 14 423 5203

Hafr el Batin

Tel : +966 13 729 3644
Fax: +966 13 729 3644

Dammam

Tel : +966 13 859 0097
Fax: +966 13 857 8177

Jubail

Tel : +966 13 361 4390
Fax: +966 13 362 4499

Hofuf

Tel : +966 13 530 1474
Fax: +966 13 530 7144

FACTORIES

SFSP - KSA

sfsp.jeddah@ikkgroup.com

Specialized Factory for Steel Products

3rd Industrial City / Jeddah

Tel: +966 12 637 4482
Fax: +966 12 636 1963

SFSP / UAE

sfsp.uae@ikkgroup.com

SIGMA Factory for Steel Products

DIC (Dubai Industrial City)

Tel : +971 4 818 1919

SFSP / Egypt

sfsp.cairo@ikkgroup.com

Specialized Factory for Steel Products

6th of October City Giza

Tel : +20 2 3820 6477
Fax: +20 2 3820 6036

SFSP / Lebanon

sfsp.lebanon@ikkgroup.com

Specialized Factory for Steel Products

Tanayel, Bekaa

Tel: +961 8 514 290
Fax: +961 8 514 291

BAHRAIN

unitech.bahrain@ikkgroup.com

Manama

Tel : +973 17 874 897
Fax: +973 17 789 470

KUWAIT

unitech.kuwait@ikkgroup.com

Kuwait City

Tel : +965 2 4924 937
Fax: +965 2 4924 938

UNITED ARAB EMIRATES

unitech.uae@ikkgroup.com

Dubai - Al Rashidiyah

Tel : +971 4 2591 773
Fax : +971 4 2591 774

Abu Dhabi - Musaffah

Tel: +971 2 552 3393
Fax: +971 2 552 5499

OMAN

unitech.oman@ikkgroup.com

Muscat

Tel : +968 24 591 006
Fax : +968 24 597 006

JORDAN

unitech.jordan@ikkgroup.com

Amman

Tel : +962 6 556 3030
Fax: +962 6 554 7911

Aqaba

Tel : +962 6 556 3030
Fax: +962 6 554 7911

PAKISTAN

unitech.pakistan@ikkgroup.com

Karachi - Clifton

Tel-Fax : +92 21 35826120

EGYPT

unitech.egypt@ikkgroup.com

Cairo 6th of October City

Tel : +20 2 3820 6477
Fax: +20 2 3820 6036

LEBANON

unitech.lebanon@ikkgroup.com

Beirut

Tel : +961 1 858 277
Fax: +961 1 858 276

ENGINEERING, DESIGN, MARKETING & MULTIMEDIA

Unitech Deutschland GmbH

Germany

unitech.germany@ikkgroup.com

Stuttgart

Tel : +49 711 6868 7222
Fax: +49 711 6868 7223

Multi-D s.a.r.l

Lebanon

multi-d@ikkgroup.com

Multi-d Beirut

Tel : +961 1 841 155
Fax: +961 1 841 156

R&D DEPARTMENT

Saih Suhaib-3, Opp DEWA Substation, Dubai Industrial City, Dubai, UAE

Tel : +971 4 818 1944 - Mob: +971 55 517 0841

Email: unitech.uae@ikkgroup.com - abed.demachkieh@ikkgroup.com