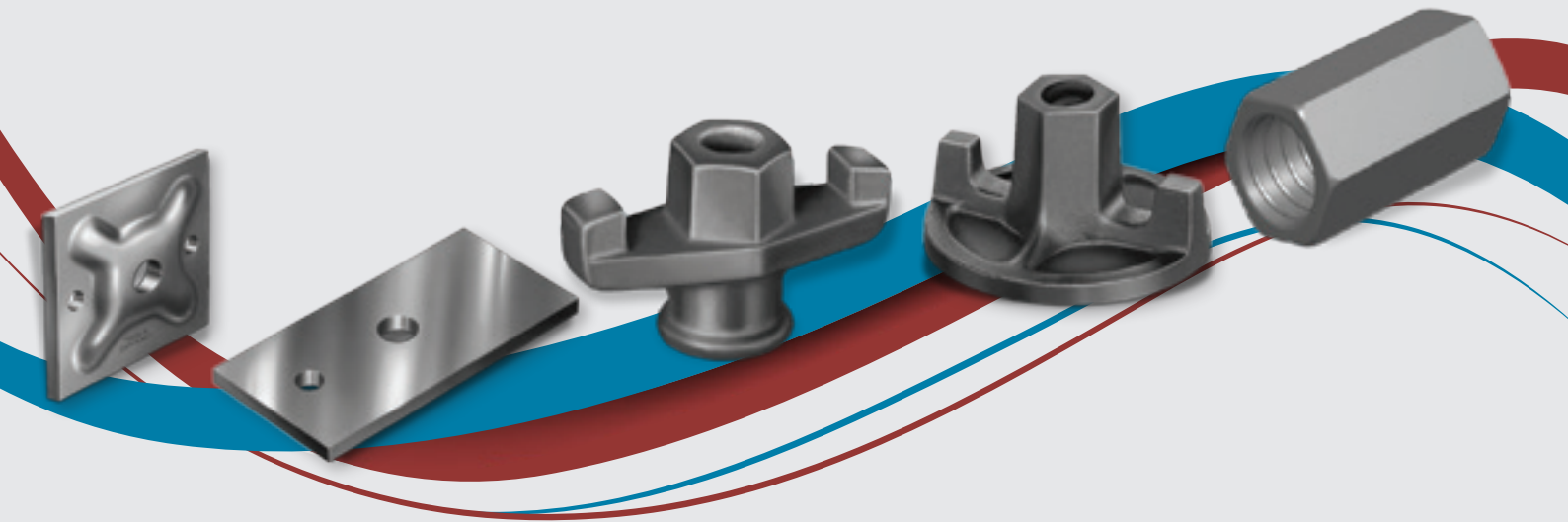


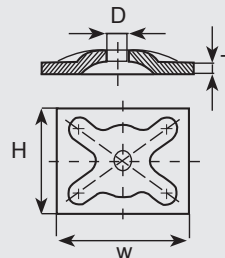
FORMWORK ACCESSORIES



GALVANIZED WALER PLATES

Plates are made from steel ST 37 to accommodate tie rods DG 15/17.
 To be used with wing nuts or hexagon nuts.
 For use in both timber and steel formwork.
 Zinc plated.
 $\varnothing D = 20$ mm.

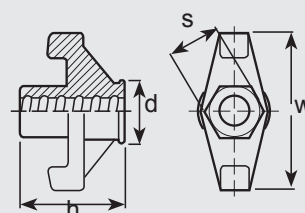
Code	Size (W x H x T)	Permissible load (KN)
UC-0160-C-GPRWR6	120 x 120x 6 mm	80
UC-0170-C-GPRWR8	120 x 120x 8 mm	90



GALVANIZED WING NUTS / SW 27

Wing nuts are made of cast iron to be used in conjunction with waler plates for securing tie rods in formwork applications.
 For use in both timber and steel formwork.
 Zinc plated.
 $h = 60$ mm, $d = 33$ mm, $w = 90$ mm, $s = 27$ mm..

Code	Permissible Load (KN)
UC-0140-C-GWNT35	80 KN

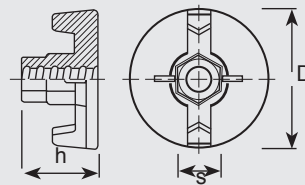


FORMWORK ACCESSORIES

GALVANIZED WALER NUTS / SW 27

Waler nuts are made from cast iron to accommodate tie rods DG 15/17.
 For use without waler or counter plates in both timber and steel formwork.
 Zinc plated.
 $h = 55 \text{ mm}$, $s = 27 \text{ mm}$.

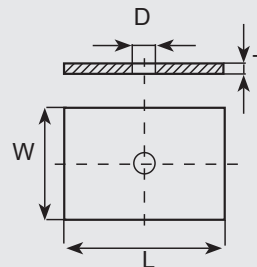
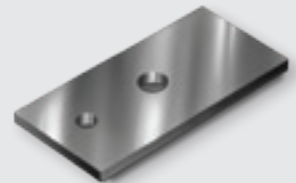
Code	Base Diameter D (mm)
UC-0175-C-GAN30	70 mm
UC-0176-C-GAN50	100 mm



GALVANIZED COUNTER PLATES / PLAIN

Counter plates made from steel ST 37.
 To accommodate tie rods DG 15/17.
 To be used in both timber and steel formwork with wing or hexagon nuts.
 Hot-dip galvanized.
 $\varnothing D = 20 \text{ mm}$.

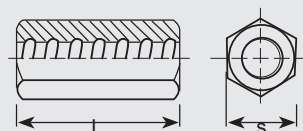
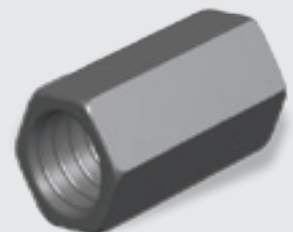
Code	Size (L x W x T)
UC-0145-C-GCP	140 x 70 mm x 8 mm



HEXAGON NUTS / SW 30

For use with tie rods DG 15/17 in both timber and steel formwork with waler or counter plate.
 50 mm length to be used also as bar connector.
 To be operated by means of a spanner.
 Zinc plated.
 Hex size $s = 30 \text{ mm}$

Code	Size
UC-0150-C-GJCP30	DG15/17 x 30 mm
UC-0155-C-GJCP50	DG15/17 x 50 mm



LOCATION

